



W



**GRADUATE & PROFESSIONAL
STUDENT SENATE**

2025 - 2026



TABLE OF CONTENTS

- [ABOUT US](#)
- [OUR MISSION](#)
- [LEADERSHIP TEAM](#)
- [FUNDING OPPORTUNITIES](#)
- [ADVOCACY & LOBBYING](#)
- [EVENTS](#)
- [COMMITTEES](#)
- [LIAISONS](#)
- [BECOME A GPSS SENATOR](#)
- [HOW TO GET INVOLVED](#)
- [CONTACT US](#)

A photograph of a brick building with multiple windows, partially obscured by a large purple diagonal overlay. A purple banner hangs vertically from the building, featuring the text 'welcome home' and a small 'UW' logo. The banner also includes a line drawing of a house.

ABOUT THE GRADUATE & PROFESSIONAL STUDENT SENATE

The Graduate and Professional Student Senate (GPSS) represents over 18,000 graduate and professional students at the University of Washington. Our Senators represent academic departments as well as non-academic programs and communities. GPSS hosts events and programming, provides opportunities for a wide breadth of engagement through internal committees and university-wide liaison positions, and offers funding for academic and professional development.



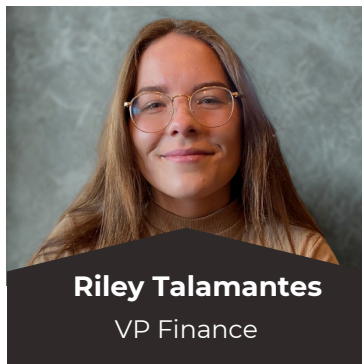
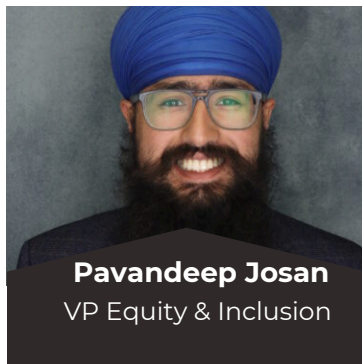
OUR MISSION

With integrity, GPSS amplifies the voices and experiences of graduate and professional students at the University of Washington, builds community, and advocates for the eradication of inequities.

- We **advocate** for the needs and interests of our constituents on campus and at the state and federal levels.
- We **promote** professional development and foster a sense of community and connection.
- We **ensure** that the University of Washington upholds our shared values by amplifying graduate and professional student voices at all levels of university decision-making.
- We **strive** to work towards an equitable and inclusive community within GPSS and the greater University of Washington campus community.

Leadership Team

The GPSS Leadership Team is a group of graduate and professional students elected each year to represent your voice, advocate for your needs, and support your success at UW. They're here to help whether you have a concern, an idea, or just need someone to point you in the right direction.



FUNDING OPPORTUNITIES

The Graduate and Professional Student Senate provides a variety of funding opportunities for graduate students' experiences outside of the classroom. The application process can be found at GPSS website: <https://www.gpss.uw.edu/fundings/>.



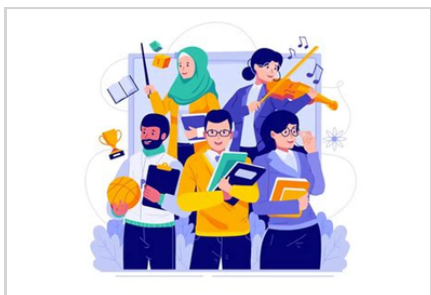
Travel Grants

Funds to support students attending or presenting at academic conferences or seminars.

- up to \$300 for travel in the U.S.
- up to \$500 for international travel verified by UW GTS.
- up to \$300 for virtual conference registration.

Diversity Funds

Funds to support programs or events related to diversity efforts that benefit a cross-section of graduate and professional students. Diversity includes, but is not limited to, consideration of race, ethnicity, gender, sexual orientation, class, disability, age, language, religion, and nationality.



Special Allocations

Funds to support events for Registered Student Organizations (RSOs).

Departmental Allocations

Funds to support events or items for specific departments.

ADVOCACY & LOBYING

GPSS **advocates** for inclusive policies at all levels of government to ensure equitable access to graduate and professional education. We are committed to advancing the well-being of all students, regardless of race, ethnicity, religion, sex, sexual orientation, gender identity, national origin, documentation status, veteran status, or disability, in pursuit of a just and accessible academic landscape.





Legislative Advisory Board (LAB) & Legislative Agenda

A GPSS Committee dedicated to collecting input from graduate and professional students and develop strategies to address these issues at the local, state, and federal levels.



Legislative Reception

GPSS kicks off the year with the Legislative Reception, a high-impact event where students and lawmakers come together as we unveil our agenda and rally support for the policies that matter most to graduate and professional students.



Huskies on the Hill

Huskies on the Hill is UW's annual lobby day, where students head to Olympia to meet with legislators and advocate for the issues that shape our lives. Organized by GPSS, ASUW, and OGR, it's a day of collective action and real impact.



Washington Student Association (WSA) and United States Student Association (USSA)

GPSS is a proud member of WSA and USSA, representing graduate and professional students to advocate for accessible, affordable, and equitable higher education at the state and federal levels.

EVENTS



GPSS hosts events **open to all graduate and professional students** to foster connection, support, and community across disciplines. From academic workshops and professional development panels to social gatherings designed to help you unwind and meet new people, our events create space for both growth and genuine connection.



Follow our event schedule at
<https://www.gpss.uw.edu/events/>



COMMITTEES

GPSS has a variety of internal committees that play a vital role in shaping the direction and decisions of the organization. These committees offer a powerful way for students to elevate graduate and professional student voices across campus. Each standing committee focuses on specific issues and responsibilities, from funding and policy to diversity and community building, and most are **open to all graduate and professional students looking to get involved and make an impact.**

COMITTEES OPEN TO ALL STUDENTS



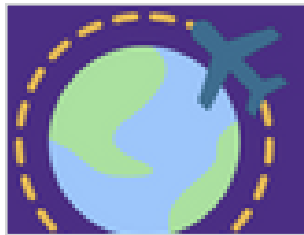
Diversity Committee

The GPSS Equity and Accountability Committee advocates for underrepresented graduate and professional students by challenging systemic inequities and advancing justice across campus.



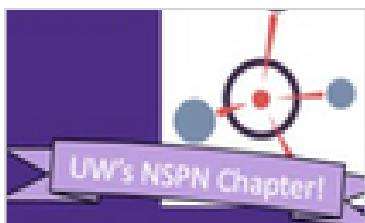
Legislative Advisory Board (LAB)

The Legislative Advisory Board (LAB) helps shape GPSS's policy agenda and leads student advocacy efforts



Travel Grants

The Travel Grants Committee (TGC) reviews and awards funding to support graduate and professional students attending academic and professional conferences.



Science & Policy Committee

The Science and Policy Committee (SPC) connects science with advocacy by empowering graduate and professional students to engage in policy, communication, and community outreach.



Arts Council

The Arts Council brings together graduate and professional students in the arts to collaborate, build community, and advocate for the needs of arts students at UW.



COMMITTEES EXCLUSIVE TO GPSS MEMBERS

Committees are exclusive to GPSS Senators and Officers because they directly govern the internal operations, structure, and financial decisions of the organization. As core components of our student-led governance, these committees ensure that GPSS remains accountable, transparent, and effective in representing the graduate and professional student body. Learn more at <https://www.gpss.uw.edu/gpss-committees/committees-for-senators/>



Executive Committee



Judicial Committee



Elections Committee



Finance & Budget Committee



LIAISONS

GPSS liaisons serve on university committees, ensuring that the voices of graduate and professional students are represented in key institutional decisions. These roles are critical to the function of GPSS and the university more broadly, with committee topics ranging from allocating funds for student services to shaping policy.

Serving as a liaison is a **unique opportunity to gain hands-on leadership and governance experience** at one of the world's leading research universities. You will work directly with university administrators, faculty, and other student leaders, gaining insight into how institutional decisions are made and influencing outcomes that impact thousands of students. **This experience can strengthen your professional profile, enhance your understanding of higher education systems, and provide concrete examples of leadership, collaboration, and advocacy for your academic or professional career.**

Application for 2025 – 2026 Liaison Positions are open at <https://www.gpss.uw.edu/gpss-committees/>



BECOMING A GPSS SENATOR

A unique on-campus leadership opportunity for graduate & professional students

Senators play a key role in connecting their departments to university-wide decision-making and ensuring the graduate and professional student voice is heard and valued. **As a GPSS Senator, you will:**

- **Attend and participate actively** in at least three Senate meetings per quarter (one may be attended by a proxy)
- **Gather feedback** from students in your department or program
- **Share updates and resources** from GPSS with your peers

Why It Matters

Amplify student voices in your department

Build meaningful connections across the UW community

Strengthen your communication and leadership skills

Gain insight into university policies and governance

Make a lasting impact on campus through service and advocacy

SENATOR HIGHLIGHTS

“

I am involved in many student leadership activities at the School of Nursing, and was also a representative to GPSS during my first year at the School. GPSS provided grounding context for the leadership activities that I undertook within the School of Nursing. It was a wonderful way to connect with students from other programs and get a sense of what was happening at UW campus-wide. Nursing tends to be very siloed, and during my time as a Senator I was able to hone my leadership abilities in a truly multidisciplinary setting.



Jasper Bang

2023–2024 Senator, Doctoral Candidate of
Family Nursing Practice

“

As a senator, I was active in lobbying for higher education initiatives in Olympia as part of Huskies on the Hill and within the general GPSS assembly. I have found the GPSS experience rewarding and encourages all students to consider representing their departments and fellow students with a voice among the university leadership.



Nam Pho

2024–2025 Senator, MS Epidemiology

SENATOR HIGHLIGHTS



“ —

GPSS gave me a community of intelligent, dedicated, and collegial peers with whom to meaningfully explore concerns that I had around equity as an early graduate student. From my beginning years as a Senator for the School of Music, to my final years as the VP of Administration, GPSS's greatest strength is, and has always been, its ability to connect and unite a diverse range of graduate students across UW around mutual causes and interests.

Jack Flesher

2022–2024 GPSS VP of Administration, PhD Ethnomusicology



“ —

GPSS provides so many opportunities for graduate and professional students to directly influence how the UW works. Beyond being a Senator or serving on a committee or board, GPSS connects students across the entire university, no matter where they are in their academic career.

A.J. Balatico

2022–2024 GPSS President, Doctorate Candidate of Learning Science

HOW TO BECOME A GPSS SENATOR

Each **degree-granting department or program** at the University of Washington may appoint **up to two Senators** to the Graduate and Professional Student Senate (GPSS), who serve as the official representatives of their graduate or professional student peers.



1 Learn Your Program's Selection Process

All programs are required to use a democratic process to appoint Senators. The exact method may vary depending on the size, structure, and concentration areas within a department.

2 Confirm Your Appointment

Once selected, a non-student staff member in your department, typically your Graduate Program Advisor (GPA) or a staff member in student services, must confirm your appointment by contacting the GPSS Vice President of Administration at gpssvpadmin@uw.edu.

3 Schedule Your Senator Orientation

After your appointment is confirmed, you are encouraged to contact the GPSS Vice President of Administration to schedule or attend a Senator Orientation. Orientation sessions provide an overview of your responsibilities, introduce you to Senate operations, and connect you with leadership and resources.

4 Begin Representing Your Peers

Once confirmed and oriented, you will become an official voting member of the GPSS Senate. Senators play a critical role in elevating student voices, shaping policy, and building connections across the University.

HOW TO GET INVOLVED

Attend Senate Meetings

All students are welcome to attend Senate meetings to stay informed and take part in what's happening across campus for graduate and professional students.

Become a Liaison

Represent graduate and professional student voices on high-level university committees, working groups, and task forces.

Join a committee

Whether you're interested in advocacy, funding, science policy, diversity, or event planning, there's a committee for you. Come as you are, no experience needed

Become a Senator

Represent your department and help shape campus-wide decisions.

Attend GPSS Events

Relax, network, and build community! Most events are free and open to all graduate & professional students.





GRADUATE & PROFESSIONAL
STUDENT SENATE

**WE ARE HERE
FOR YOU!**



CONTACT US

We're here to answer your questions and support you throughout your journey at the University of Washington. Whether you're a new or returning graduate or professional student, don't hesitate to reach out



Email

gpssvpadmin@uw.edu



Website

<https://www.gpss.uw.edu/>



@gpssuw



Subscribe

@gpssuw

Office Information

Graduate & Professional Student Senate

University of Washington
Husky Union Building (HUB) 314

Mailing Address

4001 NE Stevens Way,
Box 352238, HUB 314
Seattle, WA 98195-2238



GRADUATE & PROFESSIONAL
STUDENT SENATE

Subscribe to our GPSS email list to receive updates on events, opportunities, and resources for graduate and professional students at
<https://forms.office.com/r/aEGyxbAV7>

Thank you for exploring the Graduate and Professional Student Senate at the University of Washington. We look forward to welcoming you into a dynamic community where advocacy meets impact and every voice matters.

Email gpssvpadmin@uw.edu

Website <https://www.gpss.uw.edu/>

Subscribe to our GPSS email list to receive updates on events, opportunities, and resources for graduate and professional students at

<https://forms.office.com/r/aEGyxrbAV7>

